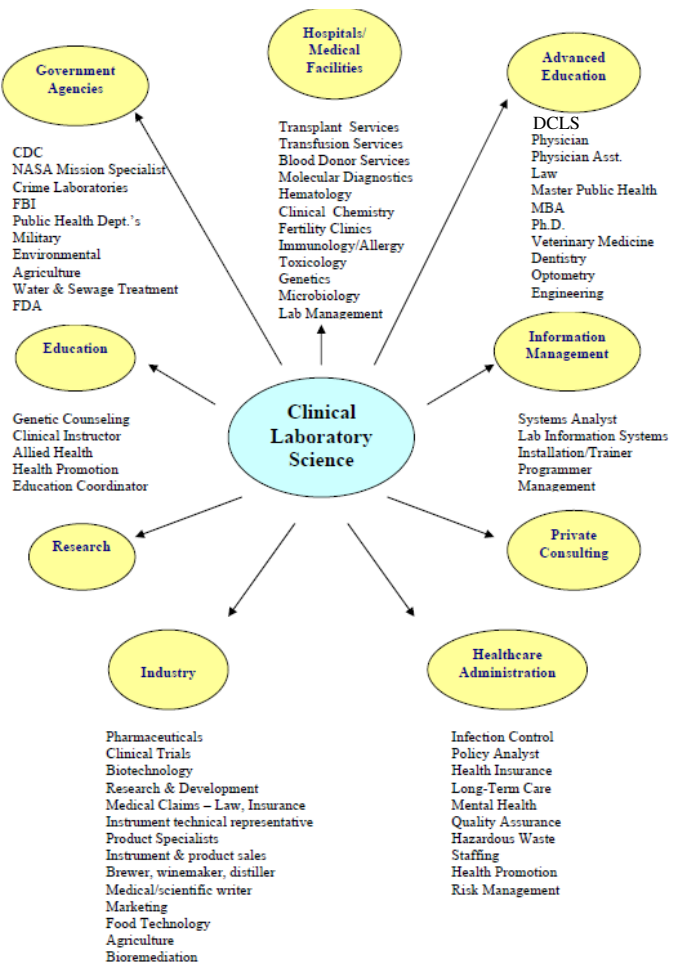


What jobs can I get with a CLS degree?



For more information contact:

ASCLS Kansas:
asclsk@gmail.com

University of Kansas
 Medical Center CLS
 Program: clsed@kumc.edu



Clinical Laboratory Science



What is Clinical Laboratory Science?

Analyzing blood, body fluids, urine, and tissues to piece the puzzle together in order to discover what is happening in the body.

Hematology

Learn how to identify the different types of white blood cells and red blood cell morphology. Learn about diseases of the blood and study the coagulation cascade and how it works in order to stop the bleeding.



Immunohematology (Blood Bank)

Explore antigen/antibody interactions. Blood compatibility goes beyond just an individual's blood type. Explore the plethora of antigens that are on red cells and learn how to identify antibodies.

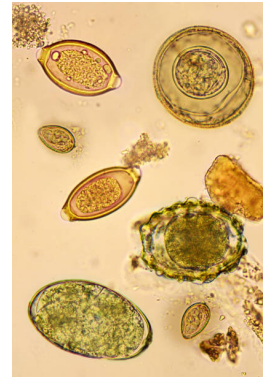
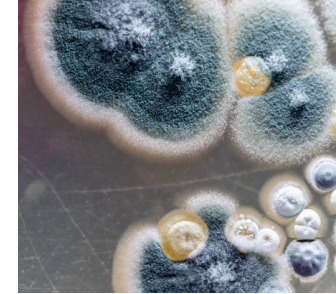


Molecular

As disease detectives in Molecular testing, learn how to extract, amplify and analyze DNA or RNA sequences. This type of testing is used to detect and monitor genetic and infectious diseases

Microbiology

In microbiology explore the world of microscopic organisms. Learn about bacteria, viruses, fungi, archaea and protozoa.



Chemistry/Urinalysis

In Clinical chemistry/urinalysis measure the body's electrolytes, lipids, proteins, enzymes, drugs, and hormones

Immunology

Learn about the function of the Immune system and how it functions in healthy people and people with diseases. Learn about autoimmune diseases, hypersensitivity and immunodeficiency.

